

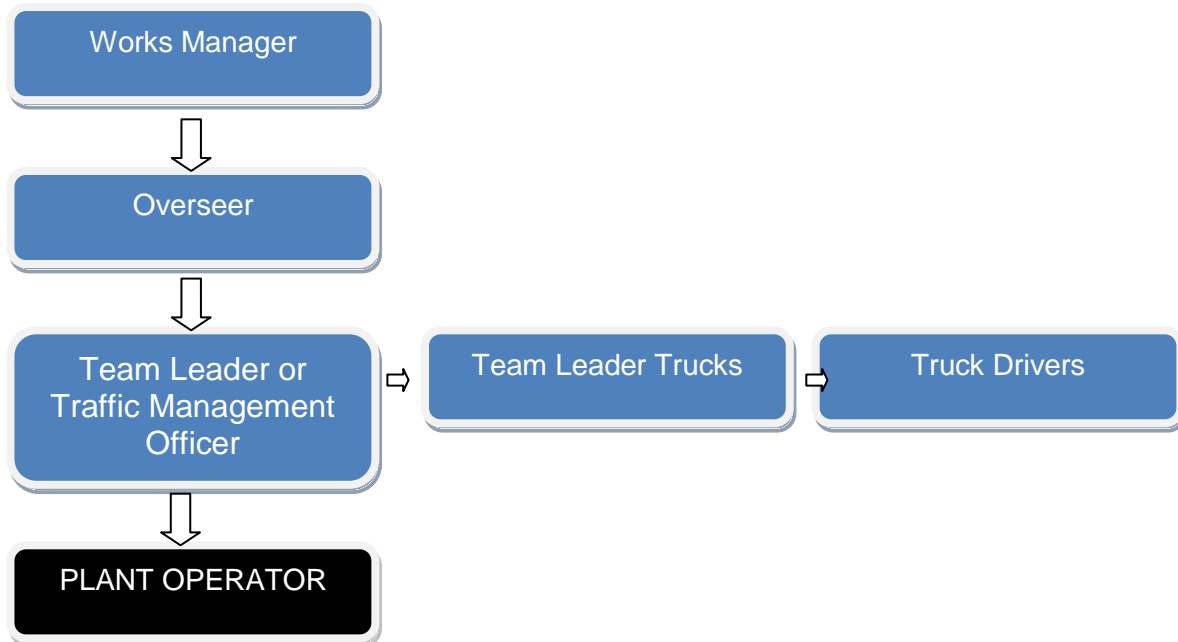


Temora Shire Council
ABN: 55 048 860 109
105 Loftus Street
Temora NSW 2666
Ph: 02 6980 1100 Fax: 02 6980 1138
Email: temshire@temora.nsw.gov.au

Position Description Plant Operator – General Labourer

Please note that Position Descriptions are under constant review and may be changed, after consultation, to reflect organisational requirements at any time.

POSITION: Plant Operator - General Labourer
SECTION: Engineering
SUPERVISOR: Works Overseer - Ganger
ENTRY LEVEL CLASSIFICATION: Grade 2
HOURS OF WORK: Casual



POSITION OBJECTIVES:

Operate items of plant as part of the road construction/maintenance team consistent with Council's works plans, policies and procedures and site conditions

Document Name: PD – Plant Operator General	Developed: May 2014	Last Amended: Aug 18	Responsible Dept: Engineering/HR	Page: 1 of 3
Document Number: HR-PD010	File path: t:\public folders\business services\human resources\recruitment\pd - plant operator - general labourer - 2 positions.doc		Version Number: 3	

KEY DUTIES AND RESPONSIBILITIES:

- Operate plant items as part of the road construction/maintenance team consistent with Council's works plans, policies and procedures and site conditions.
- Liaise with other members of the team to ensure that site conditions optimise construction/maintenance activities
- Undertake traffic control activities as required, to ensure site safety
- Ensure plant items are regularly serviced so that they are in good working order and are maintained in a neat and tidy manner
- Complete records and documentation strictly in accordance with Council's policies and procedures
- Observe work starting and finishing times to ensure team effectiveness
- Street & gutter cleaning, Road pavement maintenance, Guidepost maintenance
- Traffic control
- Operation of light, medium, heavy trucks
- Operation of plant items e.g. rollers, water carts, loaders, tractor & implements
- Other duties as required i.e. sign installation, general labour etc
- Compliance with WH&S requirements
- Use PPE as required under WH&S guidelines
- Ensure all plant and equipment used is maintained in a safe working order with any defects or breakdowns reported to the Manager or Plant Foreman
- Completion of inspection and start up documentation

SAFETY

- Ensure compliance with WH & S and Work Cover requirements
- Compliance with Council protective clothing policy
- Liaise with Councils Risk Management/Safety Officer for Risk Assessments, Safe Work Methods, etc.
- Complete necessary documentation including time sheets, prestart & daily check lists, request for maintenance, etc

TRAINING

- Consult with Supervisors regarding training requirements
- Undertake training needed to fulfill position requirements
- In house training in use of sewer "water snorter" machine and sewer blockage clearing techniques

Document Name: PD – Plant Operator General	Developed: May 2014	Last Amended: Aug 18	Responsible Dept: Engineering/HR	Page: 2 of 3
Document Number: HR-PD010	File path: t:\public folders\business services\human resources\recruitment\pd - plant operator - general labourer - 2 positions.doc		Version Number: 3	

POSITION REQUIREMENTS

Essential Criteria:

- Demonstrated experience in operations of construction plant or similar and the type of work being undertaken
- Current C Class Driver's Licence
- WorkCover Construction Induction Certificate (White Card)
- Current RMS Blue Card (Traffic Controller) or ability to obtain
- Current RMS Yellow Card (Apply Traffic Control Plans) or ability to obtain
- Demonstrated experience in following written and oral work instructions
- Good communication skills, both verbal and written
- Understanding of Work Health and Safety (WHS) issues applying to work places, and Council policies and procedures.
- Understanding of the principles of quality Customer Service
- Commitment to ongoing personal development and training

Desirable Criteria:

- Relevant Certificates for the operation of other plant
- Manual Handling training
- Chainsaw Certificate and experience in cross cutting
- First Aid Certificate
- Class MR Drivers Licence
- Knowledge of bitumen related maintenance activities

Document Name: PD – Plant Operator General	Developed: May 2014	Last Amended: Aug 18	Responsible Dept: Engineering/HR	Page: 3 of 3
Document Number: HR-PD010	File path: t:\public folders\business services\human resources\recruitment\pd - plant operator - general labourer - 2 positions.doc		Version Number: 3	