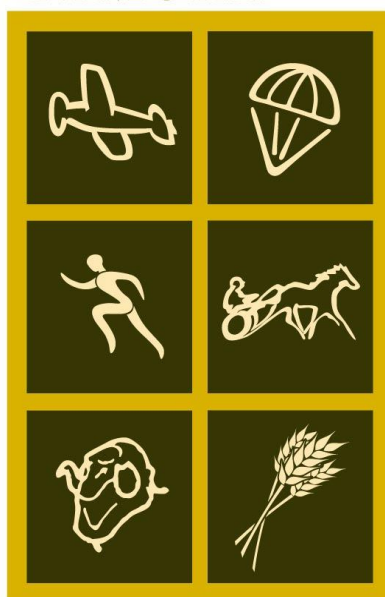


TEMORA



NSW
Riverina

Temora

Local Emergency Management Plan

April 2023



Part 1 – Administration

Authority

The Temora Local Emergency Management Plan (EMPLAN) has been prepared by the Temora Local Emergency Management Committee in compliance with the State Emergency & Rescue Management Act 1989.

APPROVED

.....

Chair

Temora Local Emergency Management Committee

Dated:

ENDORSED

.....

Chair

Riverina Murray Regional Emergency Management Committee

Dated:

Contents

Part 1 – Administration	2
Authority.....	2
Contents.....	3
Purpose.....	4
Objectives	4
Scope.....	4
Principles	5
Test and Review Process	5
Part 2 – Community Context.....	6
Annexure A – Community Profile	6
General.....	6
Landform and Topography	7
Climate	7
Land Use	8
Population and People	9
Transport Routes and Facilities	11
Economy and Industry	13
Annexure B – Hazards and Risks Summary	14
Annexure C – Local Sub Plans, Supporting Plans and Policies	17
Part 3 – Restricted Operational Information.....	18
Annexure D – Community Assets	18
Key Resources and Locations.....	18
Key Infrastructure	23
Annexure E – Vulnerable Facilities List.....	27
Annexure F – Consequence Management Guides	30

Purpose

Details arrangements for, prevention of, preparation for, response to and recovery from emergencies within the Local Government Area(s) covered by this plan.

It encompasses arrangements for:

- emergencies controlled by combat agencies;
- emergencies controlled by combat agencies and supported by the Local Emergency Operations Controller (LEOCON);
- emergency operations for which there is no combat agency; and
- circumstances where a combat agency has passed control to the LEOCON.

Objectives

The objectives of this plan are to:

- define participating organisation and Functional Area roles and responsibilities in preparation for, response to and recovery from emergencies;
- set out the control, co-ordination and liaison arrangements at the Local level;
- detail activation and alerting arrangements for involved agencies; and
- detail arrangements for the acquisition and co-ordination of resources.

Scope

The plan describes the arrangements at Local level to prevent, prepare for, respond to and recover from emergencies and also provides policy direction for the preparation of Sub Plans and Supporting Plans:

- Arrangements detailed in this plan are based on the assumption that the resources upon which the plan relies are available when required; and
- The effectiveness of arrangements detailed in this plan are dependent upon all involved agencies preparing, testing and maintaining appropriate internal instructions, and/or standing operating procedures.

Principles

The following principles are applied in this plan:

- a) The Emergency Risk Management (ERM) process is to be used as the basis for emergency planning in New South Wales. This methodical approach to the planning process is to be applied by Emergency Management Committees at all levels.
- b) Responsibility for preparation, response and recovery rests initially at Local level. If Local agencies and available resources are not sufficient they are augmented by those at Regional level.
- c) Control of emergency response and recovery operations is conducted at the lowest effective level.
- d) Agencies may deploy their own resources from their own service from outside the affected Local area or Region if they are needed.
- e) The Local Emergency Operations Controller (LEOCON) is responsible, when requested by a combat agency, to co-ordinate the provision of resources support. EOCs would not normally assume control from a combat agency unless the situation can no longer be contained. Where necessary, this should only be done after consultation with the Regional Emergency Operations Controller (REOCON) and agreement of the combat agency and the appropriate level of control.
- f) Emergency preparation, response and recovery operations should be conducted with all agencies carrying out their normal functions wherever possible.
- g) Prevention measures remain the responsibility of authorities/agencies charged by statute with the responsibility.

Test and Review Process

The Temora Local Emergency Management Committee (LEMC) will review this Plan every three (3) years, or following any:

- activation of the Plan in response to an emergency;
- legislative changes affecting the Plan; and
- exercises conducted to test all or part of the Plan.

Part 2 – Community Context

Annexure A – Community Profile

General

Situated in the North of the Riverina region of NSW, Temora Shire has an area of 2,813 sq Km and is located in the heart of the rich and productive southern wheat and sheep area of the state. Grazing and intensive animal production, work in parallel with cropping to provide the other major rural industries for Temora. Sheep production for wool and meat is the main livestock based industry, but other significant enterprises centre on cattle, including a major feedlot, and pig production on a large intensive piggery and three small operations.

The towns and villages are the major areas of population, being home to about two thirds of the Shire's residents. Temora local government area 6,034, township has a population of 4,016 and the villages of Aria Park (439) and Springdale (126) are home to the other non-rural dwellers. The towns have a cycle of activity which is sympathetic with the agricultural cycle, and Temora supports a wonderful safe and friendly lifestyle for all, with its many service industries, retail shops, professionals, medical facilities and schools.

Much of our past is there to see at the Rural Museum and the Temora Aviation Museum presents a world standard collection of working Warbirds. Above all Temora is a healthy, safe and secure place to live and a pleasure to visit. Our residents particularly enjoy sport and social activities, which are at the centre of Temora's community life. We love to showcase our town, and those experiencing Temora for work or pleasure marvel how over one hundred community groups work so well together, for the wellbeing and enjoyment of us all, in this: the friendliest little town in NSW. The Temora Shire Population is 6,400. Distances from major centres: - Wagga Wagga 87km - Sydney 410km - Canberra 212km - Melbourne 518km

Services for Children

Council recognises the requirement of Council to provide an innovative and appropriate mix of services for the residents of Temora Shire Council. The objective is to provide quality options for all residents irrespective of ethnic or socio-economic background. Highlights include:-

Long Day Care

Temora Shire Council, in conjunction with Bland Shire Council, provides quality affordable in-house childcare services for children aged 0-12 years. The service provides regular or part-time care, occasional or emergency care, before and after school care or school vacation care.

Pre-Schools

Temora Shire Council provides accommodation for the Temora Pre-School, located in Gloucester Park, and playground facilities for the Aria Park Pre-School.

Immunisation

Temora Shire Council continued to operate a free immunisation clinic targeting children aged 0-5 years of age. Year 10 students in the Temora Shire Council area are also given free booster immunisation.

Library Services

Council's efforts to raise the profile of the library for users in the 0-12 age group have been achieved by:

Conducting storytelling and craft activities during school holidays, and special occasions such as Local Government Week, Australian Library Week and Children's Book Week; these special weeks have been very successful with 20-25 children at each activity. School groups attend the library each week. Pre school storytelling & craft activities are also held on Fridays during the year. Furthermore, Council have provided funding for extension of library services to Arian Park residents through a mobile library service.

Sporting Facilities

Sport continues to play a major part in the lives of the young residents of the Council area. This is reflected in the excellent standard of facilities operated by Council, with Council sporting fields being viewed as a priority in the delivery of the effluent reuse scheme.

Web Site: Community Portal, www.temora.com.au. This website is for the exclusive use of the Temora Shire Community and includes sections for community, tourism, business and Council. Council also has a web-site which provides comprehensive information on the operations of Council (www.temora.nsw.gov.au). This site has been updated by Council participation in the local-e project run by Local Government.

Landform and Topography

Temora Shire consists of flat, very gently undulating plains. Notable exceptions to this include the Narraburra Hills in the northern extent of the Shire, Mimosa Valley in the southern extent of the Shire and the northern tip of the Bethungra Hills in the south-eastern extent of the Shire. A gravel-Ironbark ridge, identified primarily by Ingalba Nature Reserve, runs north-south approximately 8km west of Temora and 25km east of Arian Park, creating a watershed here.

Rivers & tributaries within Temora Shire are exclusively seasonal with no year-round waterflows within the Shire boundaries. Water is sourced through seasonal rains and stored for agricultural & domestic use within pond-type dams and water tanks.

Vegetation is primarily open grazing/pasture or cropped fields with dry, sclerophyll forest in isolated areas. Predominant tree species include Ironbark, White Cypress Pine and assorted Eucalypts.

Climate

The climate of the Riverina Murray region has a strong seasonal cycle, with cool to cold winters and warm to hot summers. It is considered likely to be one of the regions of New

South Wales most severely impacted by climate change because of increasing temperatures, changes in the volume and distribution of rainfall, reduced snowfalls, and decreases in river flows. Rainfall throughout the Temora area is winter–spring dominated, with average annual falls of 385 MM. The average temperature in summer is 34° with the average overnight temperature 15°. The average temperature in winter is 14° with an overnight average of 3.5°.

The *Impacts of Climate Change on Natural Hazards Profile-State Overview 2010* report identifies that for the Riverina:

Daily maximum temperatures are projected to rise across all seasons by an average of 1.5–3°C, with the greatest increase in winter and spring (2–3°C). Nights are also projected to be warmer by an average 0.5–2°C, with the greatest increase in spring (1–2°C). Rainfall is projected to shift from winter to summer dominance with overall total falls declining, especially in the winter growing season. This decline is projected to be 20–50%, with the greatest reduction in southern parts of the region. Spring and autumn are projected to be similar to winter with rainfall decreasing by up to 50%, and the largest decreases occurring in the south and west. Evaporation is projected to increase in these seasons, exacerbating the dry conditions. Projected increases in the severity of short, medium and longer term droughts are likely to lead to a decrease of up to 15% in total runoff. El Niño years experienced in the region are likely to continue to result in an increased probability of lower than average rainfall and become hotter. La Niña years experienced in the region are likely to continue to result in an increased probability of higher than average rainfall and become warmer, with storms producing heavy downpours likely to become more frequent. Projections indicate that despite water stress overall becoming more intense, there is a risk that flood-producing rainfall events are likely to become more frequent and more intense with increased summer rainfall in La Niña years in the Riverina Murray region which includes extensive floodplains and wetlands.

Land Use

Land is predominantly used for cropping and/or grazing, with distinct urban areas in & around the townships described above. Surrounding Temora (particularly to the north-east and north-west) is a substantial band of rural-residential properties, typically in 5 acre lots.

Land Use Zone / Type / Classification	Area	% of LGA
RU1 Primary Production	271,126.84 Ha	96.7%
RU3 Forestry	1077.36 Ha	0.38%
RU5 Villages	148 Ha	0.05%
R1 General Residential	220 Ha	0.08%
R5 Large Lot Residential	451 Ha	0.16%
B2 Local Centre	23 Ha	0.01%
B4 Mixed Use	49 Ha	0.02%
B6 Enterprise Corridor	77 Ha	0.03%

IN1 General Industrial	76 Ha	0.03%
SP1 Special Activities	186.46 Ha	0.07%
SP2 Infrastructure	485.22 Ha	0.17%
RE1 Public Recreation	50 Ha	0.02%
RE2 Private Recreation	26.38 Ha	0.02%
E1 National Parks & Nature Reserves	6,155.16 Ha	2.2%
W2 Recreational Waterways	48.58 Ha	0.02%

Population and People (2021 Census)

LGA	Population	Over 65		Under 15		Persons living alone	
		No.	%	No.	%	No.	% of Households
Temora	6034	1642	27.2	1095	18.1	756	31.7%

Population

In the 2021 Census, there were 6,034 people in Temora (Local Government Area) of these 48.9% were male and 51.1% were female. Aboriginal and Torres Strait Islander people made up 3.4% of the population. The median age of people in Temora was 47 years. Children aged 0 - 15 years made up 18.1% of the population and people aged 65 years and over made up 27.2% of the population. In Temora 20.4% of people were attending an educational institution. Of these, 10.5% were in preschool, 40.5% were in primary school, 30.6% in secondary school and 18.4% in a tertiary or technical institution. The most common ancestries in Temora were Australian 43.6%, English 42.6%, Irish 13.1%, German 9.7% and Scottish 10.9% with 88.8% of people were born in Australia. Other than Australia the most common countries of birth were England 1.5%, Philippines 0.6%, New Zealand 0.3%, India 0.4% and Germany 0.2%.

Dwellings

Of occupied private dwellings in Temora (Local Government Area), 92.1% were separate houses, 5.9% were semi-detached, row or terrace houses, townhouses etc, 0.5% were flats, units or apartments and 1.3% were other dwellings. In Temora, of occupied private dwellings 4.2% had 1 bedroom, 14.8% had 2 bedrooms and 44.1% had 3 bedrooms. The average number of bedrooms per occupied private dwelling was 3.2. The average household size was 2.3 people. Of occupied private dwellings, 47.6% were owned outright, 24.7% were owned with a mortgage and 22.6% were rented. In Temora, of all households, 67.2% were family households, 31.7% were single person households and 1.1% were group households.

Language

In Temora 92.2% of people only spoke English at home. Other languages spoken at home included Tagalog 0.6%, Vietnamese 0.1%, Punjabi 0.2%, Arabic 0.1% and Cantonese 0.2%.

Employment

There were 2,689 people who reported being in the labour force in the week before Census night in Temora (Local Government Area). Of these 57.6% were employed full time, 33.4% were employed part-time and 2.9% were unemployed. Of employed people in Temora, 15.9% worked 1 to 19 hours, 11.4% worked 20 to 29 hours, 23.5% worked 30 to 39 hours and 42.8% worked 40 hours or more. The most common occupations included Managers 20.5%, Professionals 14.7%, Technicians and Trades Workers 13.4%, Labourers 12.9%, and Clerical and Administrative Workers 10.4%. Of the employed people, 11.0% worked in Sheep, Beef Cattle and Grain Farming. Other major industries of employment included Supermarket and Grocery Stores 3.5%, Local Government Administration 3.4% and Aged Care Residential Services 3.6%.

Mobility

In Temora (Local Government Area), 33.3% of occupied private dwellings had one registered motor vehicle garaged or parked at their address, 34.4% had two registered motor vehicles and 24.3% had three or more registered motor vehicles. In Temora, on the day of the Census, the methods of travel to work for employed people were Car, as driver 63.7%, Walked only 6.9% and Car, as passenger 4.2%. Other common responses were Worked from Home 11.6% and Truck 1.5%. On the day, 0.6% of employed people travelled to work on public transport and 68.8% by car (either as driver or as passenger).

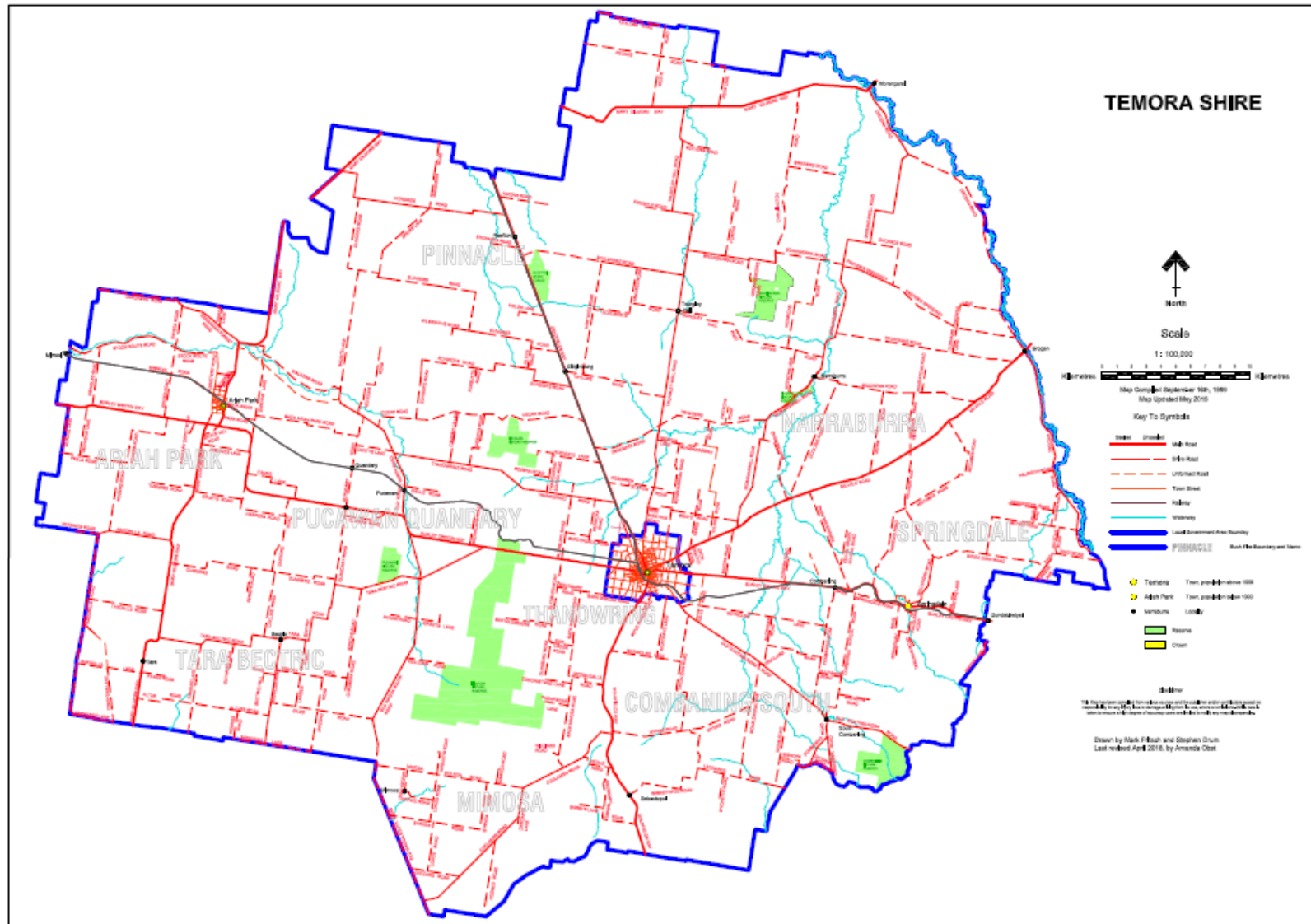
Health

In Temora (Local Government Area) residents with long-term issues are.

- Arthritis 13.1%
- Asthma 11.4%
- Cancer 3.7%
- Dementia 1.1%
- Diabetes 5.9%
- Heart Disease 5.3%
- Kidney Disease 1.3%
- Lung Condition 2.7%
- Mental Health Condition 9.3%
- Stroke 1.5%

Of these 22.6% of people have one condition, 7.8% have two conditions and 4.8% have three or more conditions. Care provided unpaid to persons with a disability, heart condition or due to old age was 13.9% and provision of unpaid care for child/children was 24.8%.

Transport Routes and Facilities



Temora LGA Map:

Localities, Road & Rail Routes

Major Roads:

State Highways

Goldfields Way (National Route B 85)
Burley Griffin Way (National Route B 94)

Regional Roads

Milvale Road (MR241)
Mary Gilmore Way (MR398)

Rail Routes:

North South – Temora/West Wyalong (rail line follows Goldfields Way northbound)
East West – Cootamundra/Griffith

Airport:

Temora Airport (TEM)
Coordinates: 34°25'18"S - 147°30'42"E
Elevation: 281mtrs
Runways:

Direction	Length (m)	Construction
05/23	2,040	Asphalt
18/36	1,486	Asphalt
09/27	840	Gravel

Rural Fire Service Water Tanks (2x 10,000 litres) available adjacent to fuelling area.
Avgas available through Temora Aeroclub (contact Rob Maslin 02 6977 1919 in the event of disruption). Jet A1 available as of 2016.

Economy and Industry

Principal employment within Temora Shire overwhelmingly revolves around agricultural & supporting industries, including transport, wholesale trade and trade services. In addition to this there exists a growing aged care & medical sector. Other notable employers include Local Government, Temora Aviation Museum and a vibrant accounting sector.

Annexure B – Hazards and Risks Summary

A Local Emergency Risk Management (ERM) Study has been undertaken by the Temora Local Emergency Management Committee identifying the following hazards as having risk of causing loss of life, property, utilities, services and/or the community's ability to function within its normal capacity. These hazards have been identified as having the potential to create an emergency. The Temora Emergency Risk Management Study should be referenced to identify the complete list of consequences and risk descriptions.

Hazard	Risk Description	Likelihood Rating	Consequence Rating	Risk Priority	Combat / Responsible Agency
Agricultural Disease (Animal/Animal)	An agriculture/horticulture incident that results, or has potential to result, in the spread of a communicable disease or infestation.	Likely	Major	Extreme	Department of Primary Industries
Communicable Disease (Human)	Pandemic illness that affects, or has potential to affect, large portions of the human population	Unlikely	Catastrophic	Extreme	Department of Health
Earthquake	Earthquake of significant strength that results in localised or widespread damage.	Rare	Major	High	LEOCON
Fire (Bush or Grass)	Major fires in areas of bush or grasslands.	Likely	Major	Extreme	NSW RFS FRNSW
Fire (Industrial)	Serious industrial fire in office complexes and/or warehouses within industrial estates.	Possible	Moderate	High	FRNSW NSW RFS

Hazard	Risk Description	Likelihood Rating	Consequence Rating	Risk Priority	Combat / Responsible Agency
Fire (Urban & Residential)	Serious commercial fires in shopping centres and adjoining residential housing, aged persons units, nursing homes and hospitals.	Possible	Major	Extreme	FRNSW NSW RFS
Hazardous Release	Hazardous material released as a result of an incident or accident.	Likely	Moderate	High	FRNSW
Heatwave	A sequence of abnormally hot conditions having the potential to affect a community adversely.	Possible	Major	Extreme	SEOCON
Explosion	Potential for explosion present in Bulk Grain Storage and imminent threat may cause community evacuations.	Possible	Moderate	High	LEOCON
Storm	Severe storm with accompanying lightning, hail, wind, and/or rain that causes severe damage and/or localised flooding.(includes tornado)	Likely	Major	Extreme	NSW SES
Transport Emergency (Air)	Aircraft crashes in LGA resulting in large number of fatalities, injuries and/or damage to property.	Possible	Major	Extreme	LEOCON

Hazard	Risk Description	Likelihood Rating	Consequence Rating	Risk Priority	Combat / Responsible Agency
Transport Emergency (Road)	A major vehicle accident that disrupts one or more major transport routes that can result in risk to people trapped in traffic jams, restrict supply routes and/or protracted loss of access to or from the area.	Possible	Major	Extreme	LEOCON
Transport Emergency involving animals (Road)	A major vehicle accident that disrupts one or more major transport routes that involves animals.	Possible	Major	High	LEOCON / LLS
Transport Emergency (Rail)	A major accident that results in environmental damage and may close rail routes for up to a week.	Possible	Major	Extreme	LEOCON / ARTC
Utilities Failure	Major failure of essential utility for unreasonable periods of time as a result of a natural or man-made occurrence.	Possible	Major	Extreme	LEOCON
Biosecurity (Animal & Plant)	Introduction or spread of certain animal and plant diseases that have potential to majorly impact local industries.	Possible	Major	Extreme	LLS

Annexure C – Local Sub Plans, Supporting Plans and Policies

Responsibility for the preparation and maintenance of appropriate sub and supporting plans rest with the relevant Combat Agency Controller or the relevant Functional Area Coordinator.

The sub/supporting plans are developed in consultation with the Temora LEMC and the community.

The plans listed below are supplementary to this EMPLAN. The sub/supporting plans have been endorsed by the LEMC and are determined as compliant and complimentary to the arrangements listed in this EMPLAN.

These plans are retained by the LEMO on behalf of the LEMC and public release versions are available on the Council Website.

Plan/Policy	Purpose	Combat / Responsible Agency
Bland Temora Bushfire Risk Management Plan	Bush & Grass Fire Response Plan (EOC support in a Section 44 level event)	NSW Rural Fire Service
Temora Pre-Event Recovery Plan	Aid preparedness for Local Government and communities to respond to natural disasters	Temora Shire Council
Temora Local Flood Emergency Sub Plan	EM arrangements for flood operations	NSW State Emergency Service
Temora YTEM Aerodrome Airport Emergency Procedure	Emergency response to Temora Airport and TAM	Local Emergency Operations Controller
Riverina LLS – FMD Preparedness and Prevention Program (Project Plan)	Foot and Mouth Disease preparedness and prevention	Local Land Services
Biosecurity animal and plant emergency subplan	Strategic EM arrangements for Biosecurity Emergencies	Local Land Services
Support Plan Agriculture and Animal Services Functional Area	Coordination Arrangements for AASFA (<i>Agriculture and Animal Services Functional Area</i>) resources	Local Land Services
LLS Concept of Operations Plan	Outlines how AASFA responsibilities will be met	Local Land Services

Part 3 – Restricted Operational Information

Annexure D – Community Assets

Key Resources and Locations

Overview

Temora hosts a variety of Emergency Responders, including (but not limited to) NSW Police Force, NSW Fire & Rescue, NSW Rural Fire Service, NSW Ambulance Service, Hospital Facilities, State Emergency Service and Local Government.

LEOCON is assigned to a delegate of the NSW Police Force.

Local Government host the LEMO position, delegated by the General Manager to the Engineering Works Manager (Phone Contact: 0419 844 759), with alternate LEMO Engineering Asset Manager (Phone Contact: 0418 510 119) and have available a fleet of Heavy & Light Vehicles for utilisation in the event of an emergency (inc. operators). Local Government also have capacity for wide-scale Traffic Control, administration and support for other lead agencies during emergency situations.

Emergency Operations Centre(s)

Temora Shire Council Chambers, 105 Loftus Street, Temora NSW 2666

Contact: LEMO – Alex Dahlenburg

Work Ph: 0419 844 759

Combat Agency Control / Operations Centre(s)

Local Land Services

361 Trungley Hall Road, Temora NSW 2666

Ph: 1300 795 299

Murrumbidgee Local Health District,

193 Morgan Street, Wagga Wagga NSW 2650

Ph:(02) 5943 2003

Police Station(s)

Temora Police Station

148 De Boos Street, Temora NSW 2666

Ph:(02) 6973 2860

Ariah Park Police Station

4 Hopetoun Street, Ariah Park NSW 2665

Ph:(02) 6974 1032

Fire Station(s)

145 Deboos St, Temora NSW 2666

Ph: (02) 6978 0544

Ambulance Station

117 Hoskins Street, Temora NSW 2666

Ph: 13 12 33

Rural Fire Service Units

106 - 108 Vesper Street, Temora, 2666

Ph: (02) 6977 4737

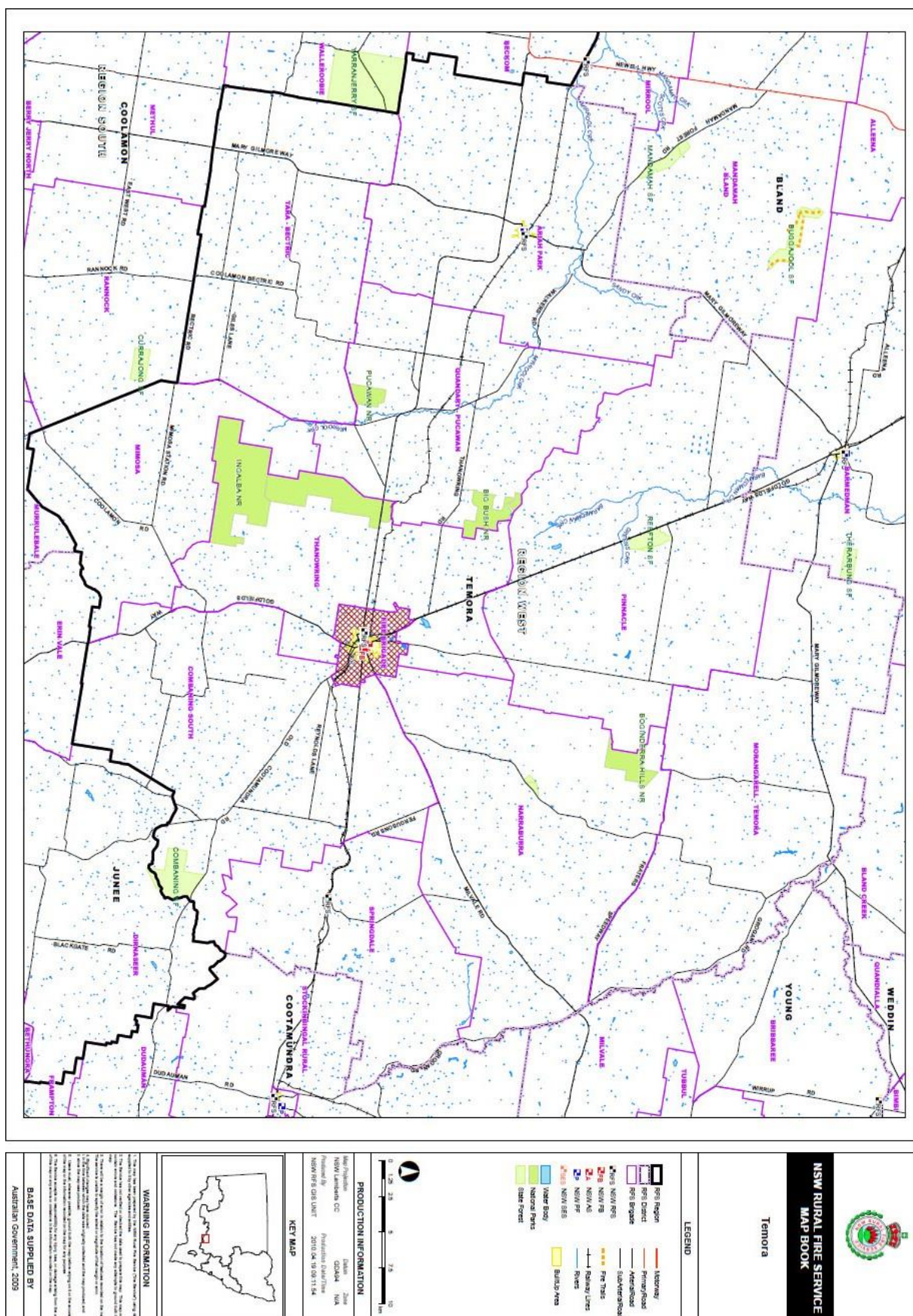


Figure 1. Temora RFS Zones

State Emergency Service Units

Vesper Street, Temora

Ph: (02) 6980 2020

Accredited Rescue Units

NSW SES Temora – Accredited Primary General Land Rescue

F&R NSW Temora – Accredited Secondary General Land Rescue

Hospitals, Medical Facilities and Capability

Temora Hospital

Address: 169-189 Loftus Street, Temora NSW 2666

Phone:(02) 6980 0200

Temora Health Service includes a 34 bed hospital delivering maternity, surgical, and aged care services to the Temora and Bland Shires. More than 1,700 patients are treated annually. Community health services including physiotherapy, mental health and transitional care are delivered by local staff with extra services provided by visiting staff. Temora Hospital is part of Murrumbidgee Local Health District. Currently hosts limited X-Ray and Pathology capability.

Temora Medical Complex

Address: 296-298 Hoskins Street, Temora NSW 2666

Phone:(02) 6977 3600

Facilities include 12 consultation rooms, specialists' rooms, minor procedure areas and on-site pathology. Externally, the new facility has on-site parking, ambulance docking area, ample parking for all patients including well located disabled parking and access.

Temora Diagnostic Imaging

Address: 193 Baker Street, Temora NSW 2666

Phone:(02) 5908 1355

Facility provides X-Ray, Ultrasound and MRI capabilities.

Evacuation Centres, Activation and Capacity

Centre Name:			
Temora Memorial Town Hall			
Street Address:		Loftus Street	
Suburb / Town:		Temora	
Nearest Cross St or Landmark:		Cnr. Loftus & De Boos Streets	
Coordinates:		34°26'47.94"S, 147°32'8.79"E	
Facility Owner:		Temora Shire Council	
Facility Type:		Town Hall	
Contacts:			
Primary Activation Contact:		Alternate Activation Contact:	
Name:	Gary Lavelle	Name:	Elizabeth Smith
Telephone:	(02) 6980 1100	Telephone:	(02) 6980 1100
Mobile:	0428 216 057	Mobile:	0427 461 685
Other:	Click here to enter text.	Other:	Click here to enter text.
Capacity			
Short Term (2.0 m2 per person)		700	
Long Term (3.5 m2 per person)		430	
Time required to set –up		1hr	
Last Audit Date		Click here to enter a date.	

Centre Name:			
Temora Recreation Centre			
Street Address:		128-130 Anzac Street	
Suburb / Town:		Temora	
Nearest Cross St or Landmark:		Adjacent to Temora Primary School, includes Temora Swimming Pool (Indoor and Outdoor pools)	
Coordinates:		34°26'39.67"S, 147°32'11.13"E	
Facility Owner:		Temora Shire Council	
Facility Type:		Recreation Complex inc. Indoor Sporting Hall	
Contacts:			
Primary Activation Contact:		Alternate Activation Contact:	
Name:	Gary Lavelle	Name:	Kris Dunstan
Telephone:	(02) 6980 1100	Telephone:	(02) 6980 1100
Mobile:	0428 216 057	Mobile:	0408 639 688
Other:	Click here to enter text.	Other:	Click here to enter text.
Capacity			
Short Term (2.0 m2 per person)		900	
Long Term (3.5 m2 per person)		510	
Time required to set –up		1hr	
Last Audit Date		Click here to enter a date.	

Centre Name:			
Temora Ex Services Memorial Club			
Street Address:		130 Baker Street	
Suburb / Town:		Temora	
Nearest Cross St or Landmark:		Corner of Baker and Loftus Sts	
Coordinates:		34°44'70.23"S, 147°53'21.04"E	
Facility Owner:		Temora Ex Services Club	
Facility Type:		Club	
Contacts:			
Primary Activation Contact:		Alternate Activation Contact:	
Name:	Club Manager	Name:	Click here to enter text.
Telephone:	(02) 6977 4177	Telephone:	Click here to enter text.
Mobile:	Click here to enter text.	Mobile:	Click here to enter text.
Other:	Click here to enter text.	Other:	Click here to enter text.
Capacity			
Short Term (2.0 m2 per person)		1100	
Long Term (3.5 m2 per person)		620	
Time required to set –up		1hr	
Last Audit Date		Click here to enter a date.	

Key Infrastructure

Power Stations, Sub Stations and Key Distribution Points

Essential Energy Substation - 4689 Old Cootamundra Road, Temora NSW 2666

Essential Energy Depot – Twynam Street, Temora

Water Treatment and Key Distribution Networks

Potable Water Infrastructure managed by Goldenfields County Council. Temora township reservoirs (2) located on Loftus Street at the intersection with Gallipoli Street.

Reservoir (1) located Burley Griffin Way/Narraburra Street intersection.

Reservoir (1) + Storage Tanks (3) located Coolamon Rd/Burley Griffin Way intersection.

Key distribution networks follow Burley Griffin Way and Goldenfields Way.

Lake Centenary, approximately 5km north of Temora on the Goldfields Way, is available in the event of bushfires for refilling of water tankers.

Lake Arbortree, approximately 5km North of Aria Park on Stock Route Road, is available in the event of bushfires for refilling of water tankers.

Additional significant water dams exist on Howards Road (nr. Intersection with Speirs Road) for use at the local piggery and on Porters Lane for use at the feedlot located there.

Sewerage Treatment and Key Networks

Sewer Treatment Plant located on Teal Street, operated by Temora Shire Council. Infrastructure extends throughout Temora (underground) with highest risk on the Trunk Main running from the intersection of Trungley Hall Road & Goldfields Way to the Treatment Plant. A 40-year replacement strategy has been enacted commencing FY15/16.

Properties outside of the urban Temora township utilise a septic tank system for home effluent treatment.

Fuel Depots

South West Fuel Centre – Bulk Fuel – 9 Ironbark St, Temora NSW 2666

24/7 South West Fuel Ariah Park – Pitt St Ariah Park NSW 2665

Phone: (02) 6977 2999

Ampol Temora - 109 Hoskins St. Temora NSW 2666

Phone: (02) 6977 1265

Ampol Woolworths – 110 Hoskins St Temora NSW 2666

Phone: (02) 6978 0738

Metro Petroleum Temora – 90 Victoria St Temora NSW 2666

Phone: (02) 9328 9339

Shell Service Station Temora – 145-147 Hoskins St Temora NSW 2666

Phone: (02) 6977 1876

Telephone Exchanges

Temora Exchange - De Boos Street, Temora NSW 2666

Located between Loftus & Parkes Streets. Best access through Little Hoskins Street. Shown as 'TEM' on map below.



Radio Network Infrastructure

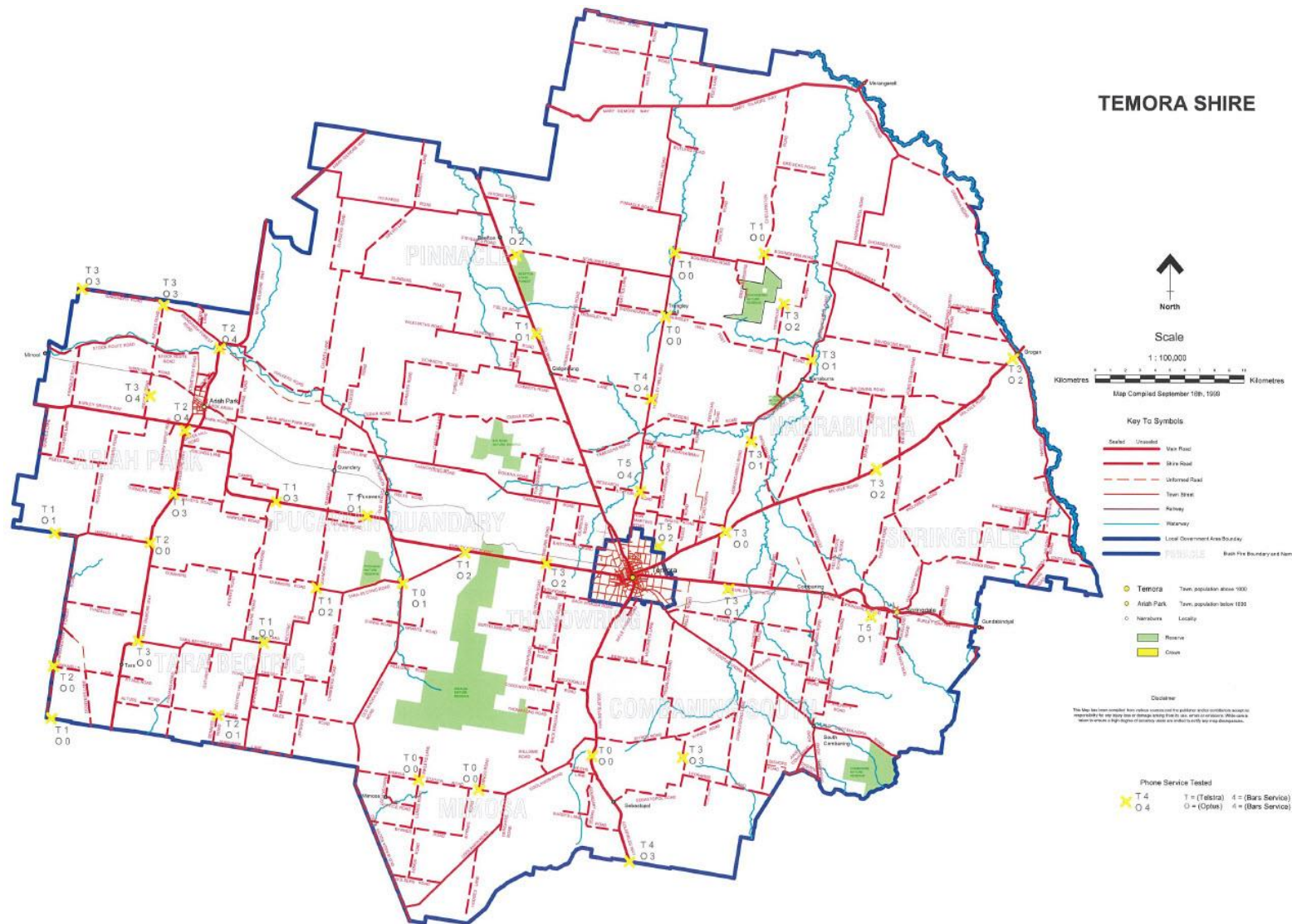
CB (Civilian Band) Radio utilised throughout Shire with communication generally considered 'good' due to flat topography.

Commercial Broadcasting Infrastructure

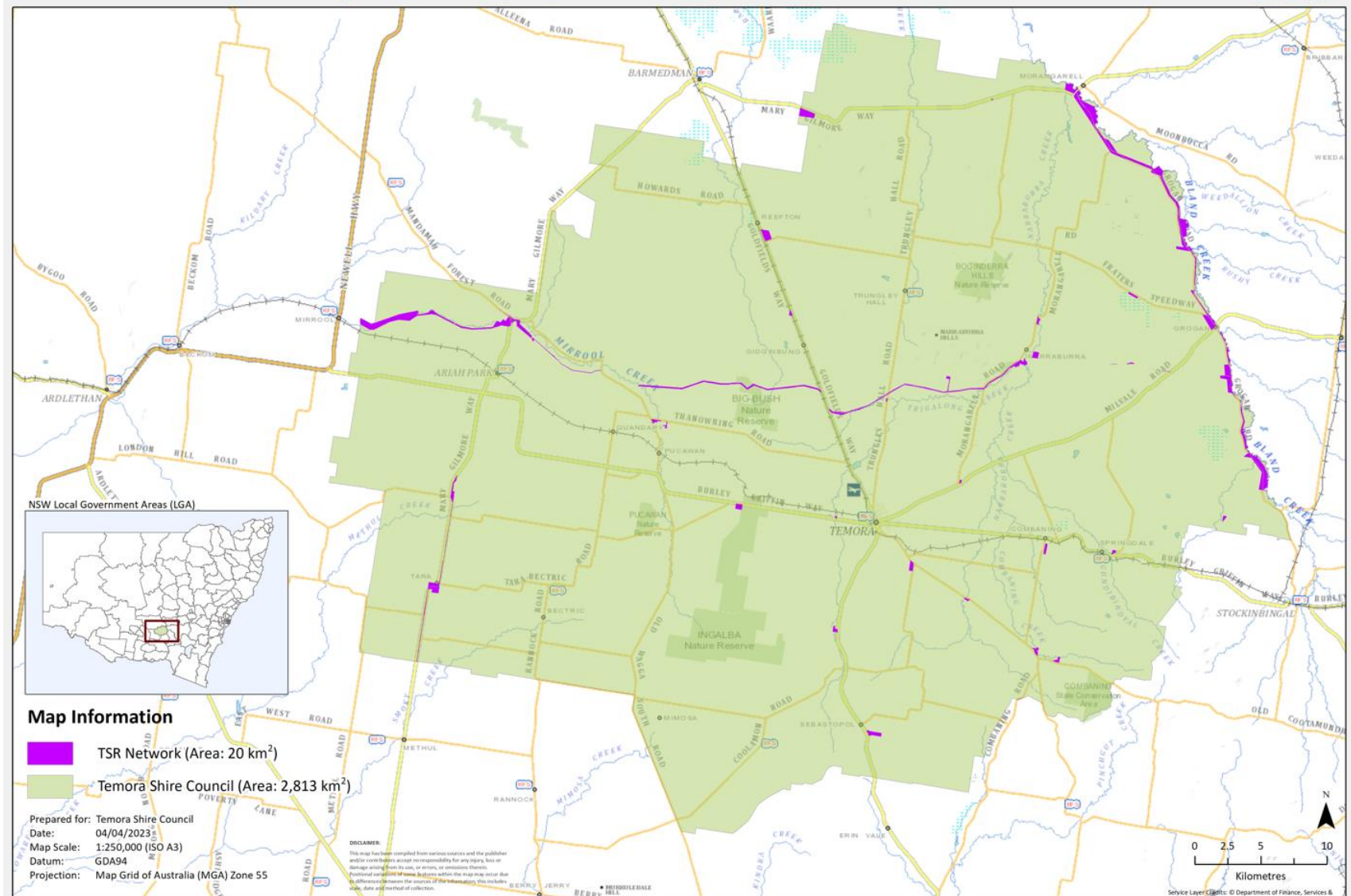
Local commercial radio station operates out of Temora (TEM FM 102.5) with broadcasting facilities local. Available for dissemination of information to the community.

Mobile Phone Infrastructure Locations

Mobile Phone mast located in Temora. Signal strengths for Telstra & Optus shown for precise locations on map below.



Temora Shire Council Travelling Stock Route (TSR) Network



Annexure E – Vulnerable Facilities List

Name	Type	Address	Telephone	Population
Temora District Hospital	Hospital (Public)	169-189 Loftus Road, Temora NSW 2666	(02) 6980 0200	>100
A Dragons Tale Early Education Centre	Pre School	17 Beattie St, Temora NSW 2666	(02) 6977 2770	50-60
Temora Public School	Primary School	119 Deboos St, Temora NSW 2666	(02) 6977 2877	>250
Temora West Public School	Primary School	Truskett Street, Temora NSW 2666	(02) 69771889	>200
The Whiddon Group Temora (Narraburra Lodge)	Aged Care Facility	180 Kitchener Rd, Temora NSW 2666	(02) 6980 2800	>60
The Whiddon Group Temora (Greenstone Lodge)	Aged Care Facility	119 Gloucester St, Temora NSW 2666	(02) 6980 2800	>50
Saint Anne's Central School (Catholic)	Primary School	123 Deboos St, Temora NSW 2666	(02) 6977 1011	>250
Ariah Park Central Public School	Primary School	1 Harrison St, Ariah Park NSW 2665	(02) 6974 1105	>150
Temora Preschool & Out Of School Hours (OOSH)	Pre School	161 Loftus St, Temora NSW 2666	(02) 6977 1683	>60
Ariah Park Preschool	Pre School	6 – 8 Harrison Street, Ariah Park NSW 2665	(02) 6974 1368	>50
Pinnacle House	Disability Care Service	58 Aurora Street, Temora, NSW 2666	(02) 6977 2653	>10
Bright Beginnings Early Years Learning Centre	Pre School	9-11 Timmins Street, Temora, NSW 2666	(02) 6977 1006	>50

Name	Type	Address	Telephone	Population
Pinnacle Supported Independent Living	Care Service	115 Tonkin Street, Temora, NSW 2666	(02) 6978 1973	>5

Annexure F – Consequence Management Guides

The following consequence management guides relate to hazards that are rated Moderate or require significant coordination. CMG's adopted and signed off as appropriate.

CMG files:

- 1) Biosecurity
- 2) Human Pandemic
- 3) Transport Accident (Road, Rail, Aviation)
- 4) Fire - Urban
- 5) Hazmat
- 6) Fire - Industrial
- 7) Fire – Bush/Grass
- 8) Flood – Rainfall Event
- 9) Storm
- 10) Transport accidents involving animals